



**AIR  
SPIRALO®**

*VENTILATION DUCTS & FITTINGS*

## **Air Spiralo®** Dampers

### **Application**

**Balancing and shut-off dampers for all purposes in ventilation systems.**

- Balancing dampers: to regulate the required airflow
- Shut-off dampers: for airtight isolation of ventilation systems

### **Unique features:**

- Short built-in lengths
- A wide range of KLM models for all your needs
- KLM dampers can be easily insulated even after installation
- Rigid construction, easy to install through 'Soft-Edge'-technology
- Certification according to EN12237, VTT SERT R022-4 and DW144
- Air Spiralo® products comply to the European standards



## Balancing dampers KLM and KLK

The KLM and KLK models are the most applied balancing dampers to regulate the required airflow. These dampers are equipped with a turning blade, adjustable from 0 – 90° (90° is closed). A certain airflow will always leak through even when the blade is closed.



### KLM

- Metal cup
- Stepless adjustable
- Blade attached by a synthetic bush at both ends
- Not suitable for 100% closing
- Standard and KEN-LOK® version

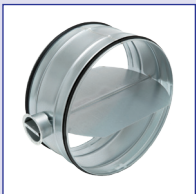


### KLK

- Synthetic cup
- Stepped adjustable
- Blade attached by a synthetic bush at one end
- Not suitable for 100% closing
- Standard and KEN-LOK® version

## Balancing damper with short (cut-off) blade KLMSB

The blade is designed to generate a minimum of noise: noise levels are similar to a perforated blade (but a low risk of clogging since the KLMSB blade lacks perforations). Corner adjustments have less influence on the airflow.



### KLMSB

- Short (cut-off) blade
- Metal cup
- Stepless adjustable
- Blade attached by a synthetic bush at both ends
- Not suitable for 100% closing
- KEN-LOK® version

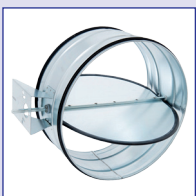
## Shut-off dampers KLMC

Shut-off dampers are used for 100% closing application. The KLMC has an adjustable circular blade with a rubber edge for airtight closing. The KLKCM version can optionally be delivered complete with a motor shelf.



### KLMC

- 100% closed model
- Stepless adjustable
- Blade attached by a synthetic bush at both ends
- KEN-LOK® version



### KLKCM (with motor shelf)

- 100% closed model
- Stepless adjustable
- Blade attached by a synthetic bush at both ends
- KEN-LOK® version
- Motor shelf with extended spindle
- Suitable for Belimo motor types LM, NM, SM GM and Sauter motor type AK31P

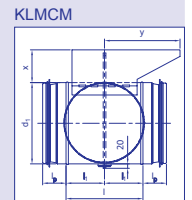
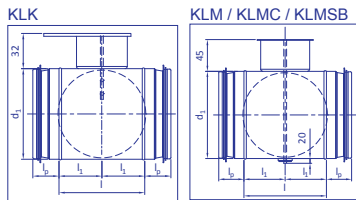
Orders and requests for quotation: [sales@airspiralo.co.uk](mailto:sales@airspiralo.co.uk)  
For additional information: [www.airspiralo.com](http://www.airspiralo.com)

## Technical details

Diameter range	KLM range Ø80 – Ø630 mm KLK model Ø80 – Ø200 mm
Material type	Galvanized steel, other material on request
Bushes	Polyamide (max. 150°C)
Insulation thickness	Serves 50 mm insulation
Air tightness class	D for KEN-LOK® models with rubber seal C for non KEN-LOK® models (standard)
KEN-LOK®	Double lip rubber seal (rolled over edge, fixed by the 'Soft-Edge' technology) at each side of the fitting



## Dimensions



Ø d <sub>1</sub> (mm)	l (mm) KLK	l (mm) KLM
80	110	88
100	110	88
125	110	88
150	110	88
160	110	88
180	110	88
200	110	88
224		88
250		88
280		88
300		88
315		88
355		88
400		88
450		128
500		128
560		128
630		128

Ø d <sub>1</sub> (mm)	l (mm)	x (mm)	y (mm)
80	88	38	126
100	88	42	126
125	88	46	126
150	88	49	126
160	88	51	126
180	88	52	126
200	88	52	126
224	88	53	126
250	88	54	126
280	88	54	126
300	88	54	126
315	88	54	126
355	88	54	126
400	88	55	126
450	128	55	126
500	128	55	126
560	128	55	126
630	128	55	126

Also available in the Air Spiralo® damper range: iris dampers/volume control dampers. For more information refer to [www.airspiralo.com](http://www.airspiralo.com) or ask for the brochure.

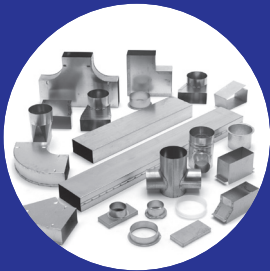


For technical specifications refer to [www.airspiralo.com](http://www.airspiralo.com)



Orders and requests for quotation: [sales@airspiralo.co.uk](mailto:sales@airspiralo.co.uk)  
For additional information: [www.airspiralo.com](http://www.airspiralo.com)

Member of Air Spiralo® Group



VENTILATION DUCTS & FITTINGS

## Assortment

Air Spiralo® KEN-LOK®

Ducts and fittings

Air Spiralo®

Ducts and fittings

Air Spiralo®

Rectangular ventilation ducts and fittings

Air Spiralo®

Silencers

Air Spiralo®

Dampers

Air Spiralo®

Ventilation hoods

Air Spiralo®

Components, mounting material and  
ducting ancillaries



Air Spiralo® • Kennemer Schagen Industries BV

P.O. Box 51 • 1740 AB Schagen • The Netherlands

T +31 224 210067 • F +31 224 216 545 • info@airspiralo.com • www.airspiralo.com