



AIR
SPIRALO®

VENTILATION DUCTS & FITTINGS

ID Iris dampers

Application

The ID Iris damper is a module for controlling, balancing and measuring the air flow rate. The airflow is stepless adjustable up to approx. 30% free opening. The air flows more smoothly and with less resistance than with other control dampers.

There is an opening on both sides of the diaphragm with a connection option to measure the pressure in front and at the back of the valve. By this, the damper can be accurately regulated to the correct position based on the pressure difference.

Unique features:

- Range Ø80 – Ø800 mm
- Precise flow measurement
- Independent working of flow direction
- Can be opened 100% to facilitate duct cleaning
- KEN-LOK rubber seal on the coupling ends



Iris damper



The Iris damper offers precise measurement of the airflow.

Because of the centric airflow regulation, the air volume is even and the noise level constantly low.

The airflow is determined by measuring the pressure difference of the valve through the measuring holes on either side. You can then read the corresponding flow rate in a diagram.

The diaphragm damper blades form a measuring flange for flow measuring. The airflow can be easily readjusted based on the measured difference over the measuring holes and the corresponding graph (see the technical information of the iris dampers).

The damper can be fully opened for duct cleaning, the adjustment scale can be used to reobtain the correct setting after duct cleaning.

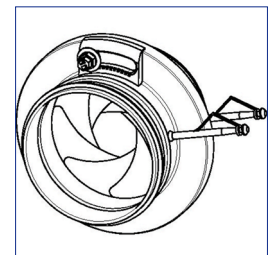


Installation

Consider the required minimal straight distance to obtain accurate flow measurement. With an ideal flow, the variation will be $\pm 7\%$. For correct functioning the iris damper should not be loaded with the weight of the adjoining ducts. For correct installation refer to the installation details.

Technical details

Diameter range	Ø80 – Ø800 mm
Material type	Zinc plated steel
Seal	EPDM
Air tightness class	ATC3



For extra information
scan this QR-code:

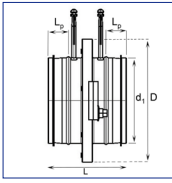


sales@airspiralo.com

For extra information and technical specifications, please visit www.airspiralo.com; these data are leading

Dimensions

ID



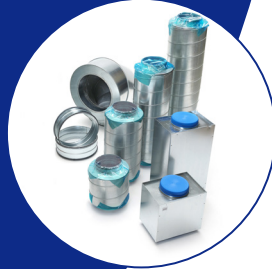
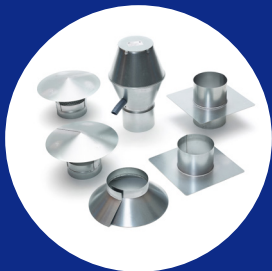
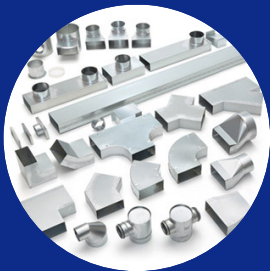
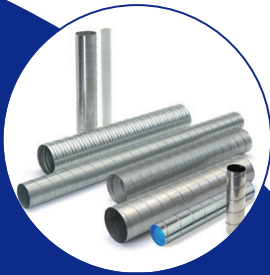
$\varnothing d_1$ (mm)	$\varnothing D$ (mm)	L (mm)	L_p (mm)
80	125	110	30
100	165	110	30
125	188	110	30
160	230	110	30
200	285	110	30
250	335	135	40
315	410	135	40
400	525	190	60
500	655	170	50
630	815	170	50
800	1015	270	100



Installation details

The accuracy of flow measurement depends on correct installation.

Application	Safety distance Variation $\pm 7\%$	Safety distance Variation $\pm 10\%$
	$L \geq 1D$	$L \geq 1D$
	$L \geq 4D$	$L \geq 2D$
	$L \geq 2D$	$L \geq 2D$
	$L \geq 2D$	$L \geq 2D$



VENTILATION DUCTS & FITTINGS

Assortment

KEN-LOK

Fittings

Dampers

Silencers

Access doors

Damp proof

Fire dampers

Insulated

SPIRALO

Ventilation hoods

Flexible ducts

Components

Mounting material



Air Spiralo BV • Lagedijkerweg 15 • 1742 NB Schagen • The Netherlands

T +31 224 210 062 • sales@airspiralo.com • www.airspiralo.com

Member of Air Spiralo Group