



AIR
SPIRALO®

VENTILATION DUCTS & FITTINGS

KEN-LOK Dampers

Application

Balancing and shut-off dampers for all purposes in ventilation systems.

- Balancing dampers: to regulate the required airflow
- Shut-off dampers: for airtight isolation of ventilation systems

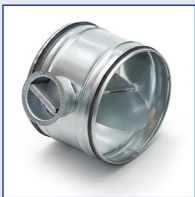
Unique features:

- Short built-in lengths
- A wide range of KLM models for all your needs
- KLM dampers can be easily insulated even after installation
- Rigid construction, easy to install through 'Soft-Edge'-technology
- The KLM-dampers comply with the international standards NEN-EN 1506:2007 - NEN-EN 10346:2015 - NEN-EN 1751:2014
- KLM dampers are available in two versions: with rubber seal (KEN-LOK), without rubber seal (SPIRALO)
- KEN-LOK rubber seal at each side of the fitting



Balancing dampers KLM and KLK

The KLM and KLK models are the most applied balancing dampers to regulate the required airflow. These dampers are equipped with a turning blade, adjustable from 0 – 90° (90° is closed). A certain airflow will always leak through even when the blade is closed.



KLM

- Metal cup
- Stepless adjustable
- Blade attached by a synthetic bush at both ends
- Not suitable for 100% closing
- KEN-LOK and SPIRALO version

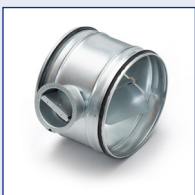


KLK

- Synthetic cup
- Stepped adjustable
- Blade attached by a synthetic bush at one end
- Not suitable for 100% closing
- KEN-LOK version

Balancing damper with short (cut-off) blade KLMSB

The blade is designed to generate a minimum of noise: noise levels are similar to a perforated blade (but a low risk of clogging since the KLMSB blade lacks perforations). Corner adjustments have less influence on the airflow.



KLMSB

- Short (cut-off) blade
- Metal cup
- Stepless adjustable
- Blade attached by a synthetic bush at both ends
- Not suitable for 100% closing
- KEN-LOK version

Shut-off dampers KLMC

Shut-off dampers are used for 100% closing application. The KLMC has an adjustable circular blade with a rubber edge for airtight closing. The KLKCM version can optionally be delivered complete with a motor shelf.



KLMC

- 100% closed model
- Stepless adjustable
- Blade attached by a synthetic bush at both ends
- KEN-LOK version



KLKCM (with motor shelf)

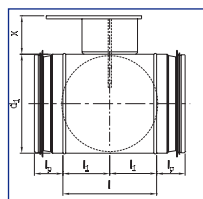
- 100% closed model
- Stepless adjustable
- Blade attached by a synthetic bush at both ends
- Motor shelf with extended spindle
- Suitable for Belimo motor types LM, NM, SM, GM
- KEN-LOK version

Technical details

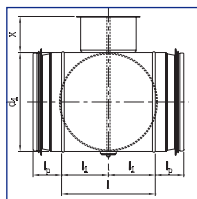
Diameter range	KLM range Ø80 – Ø630 mm KLK model Ø80 – Ø200 mm
Material type	Galvanized steel, stainless steel on request
Bushes	Polyamide (max. 150°C)
Insulation thickness	Serves 50 mm insulation
Dampers in two versions	With rubber seal (KEN-LOK), without rubber seal (SPIRALO)
Air tightness class	KEN-LOK version class ATC2, SPIRALO version class ATC3

Dimensions

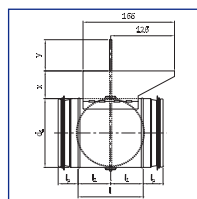
KLK



KLM / KLMC / KLMSB



KLMCM



Ø d ₁ (mm)	l (mm) KLK	l (mm) KLM
80	98	88
100	98	88
125	98	88
150	98	88
160	98	88
180	98	88
200	98	88
224		88
250		88
280		88
300		88
315		88
355		88
400		88
450		128
500		128
560		128

Ø d ₁ (mm)	l (mm)	x (mm)	y (mm)
100	88	44	56
125	88	46	68
160	88	50	80
200	88	52	68
250	88	53	52
315	88	54	70
400	88	55	84
500	128	56	83

For extra information
about all dampers
scan this QR-code:

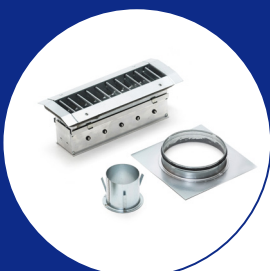
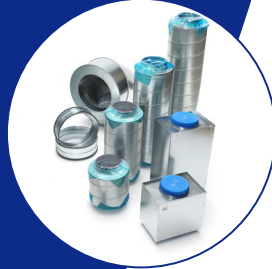
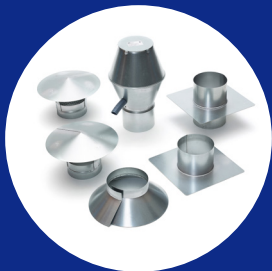
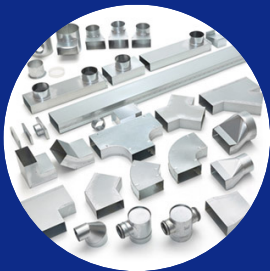
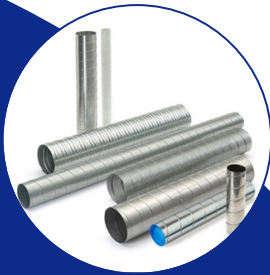


For iris dampers
scan this QR-code:



For back-draft dampers
scan this QR-code:





VENTILATION DUCTS & FITTINGS

Assortment

KEN-LOK

Fittings

Dampers

Silencers

Access doors

Damp proof

Fire dampers

Insulated

SPIRALO

Ventilation hoods

Flexible ducts

Components

Mounting material



Air Spiralo BV • Lagedijkerweg 15 • 1742 NB Schagen • The Netherlands

T +31 224 210 062 • sales@airspiralo.com • www.airspiralo.com

Member of Air Spiralo Group